

## RIGHT OF WAY MAINTENANCE

In the interest of protecting our members from electrical hazards and providing reliable electrical service, we conduct aggressive right-of-way clearing (ROW) along our lines. Trees touching power lines are the most common cause of service outages and “blinks”.

ROW clearing includes cutting, mowing and spraying at minimum a 30 ft right of way for single phase line and at minimum a 40 ft right of way for a three phase line and certain distances around buried gas pipelines and electric facilities.



## CLEAR ACCESS

We work hard to provide our members with safe and reliable energy. To help maintain this level of service, we ask that you follow these landscaping tips.

- Leave clearance for our employees to work on utility equipment.
- Trim shrubs and bushes planted near utility equipment.
- Keep utility equipment free from obstructions.

### Utility & Clearance Needed for Operations

Meters	3 feet on all sides
Riser	3 feet on all sides
Padmount equipment	10 feet on all sides

## SAFETY

Our first priority is safety for our employees, members and the general public.

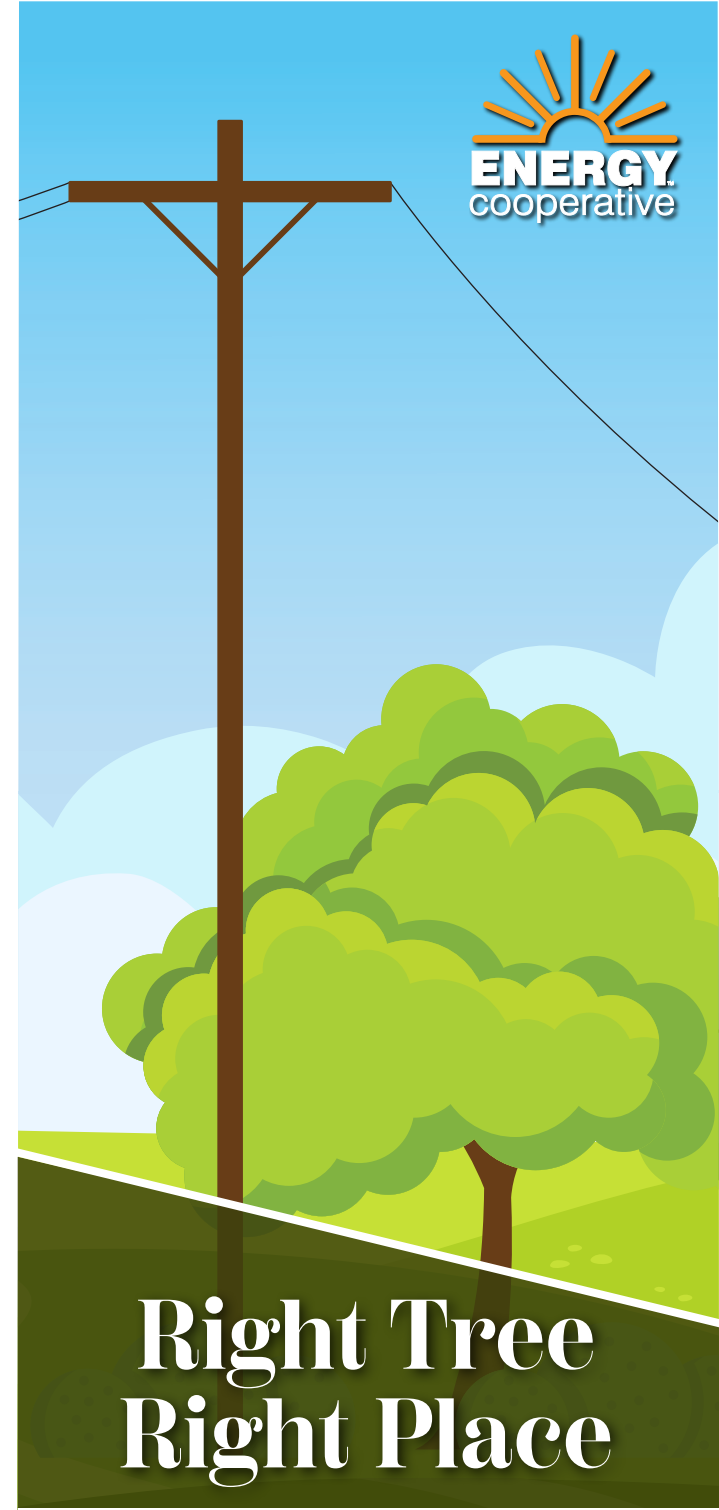


## DOWNED POWER LINES

Keep a safe distance from overhead lines. They are not insulated, so they are placed overhead and well out of reach or underground. Downed or hanging electrical wires can be covered by trees or debris and could be energized. Consider any object touching lines to be energized as well. If you see a downed power line or another electrical hazard, call 911 then call us at 888-535-5732 to report it.



If you have an emergency or need to report an outage, call us at 888-535-5732.



# Right Tree Right Place

[myenergycoop.com](http://myenergycoop.com)

# Plan for the Future When Planting a Tree

**At The Energy Cooperative our number one goal is safety.** Trees conduct electricity and create a safety hazard when limbs grow too close to power lines. Outages or flickers can occur when trees or branches come into contact with overhead lines. Electrical arcing from a wire to a nearby branch can cause fires.

Trees growing near power lines must be pruned to maintain a safe distance from the wires. If you have trees that appear to be growing into power lines, contact The Energy Cooperative at 740-344-2102. Never try to prune them yourself. Utilities have skilled professionals trained to safely trim trees for electric line clearances.



## LOW TREE ZONE

Avoid planting within 20 ft. of power lines. If planting is unavoidable, only plant shrubs and small trees that reach a mature height of 15 ft. or less.

## MEDIUM TREE ZONE

Plant medium trees (under 40 ft. when mature) at least 25 ft. away from power lines.

## LARGE TREE ZONE

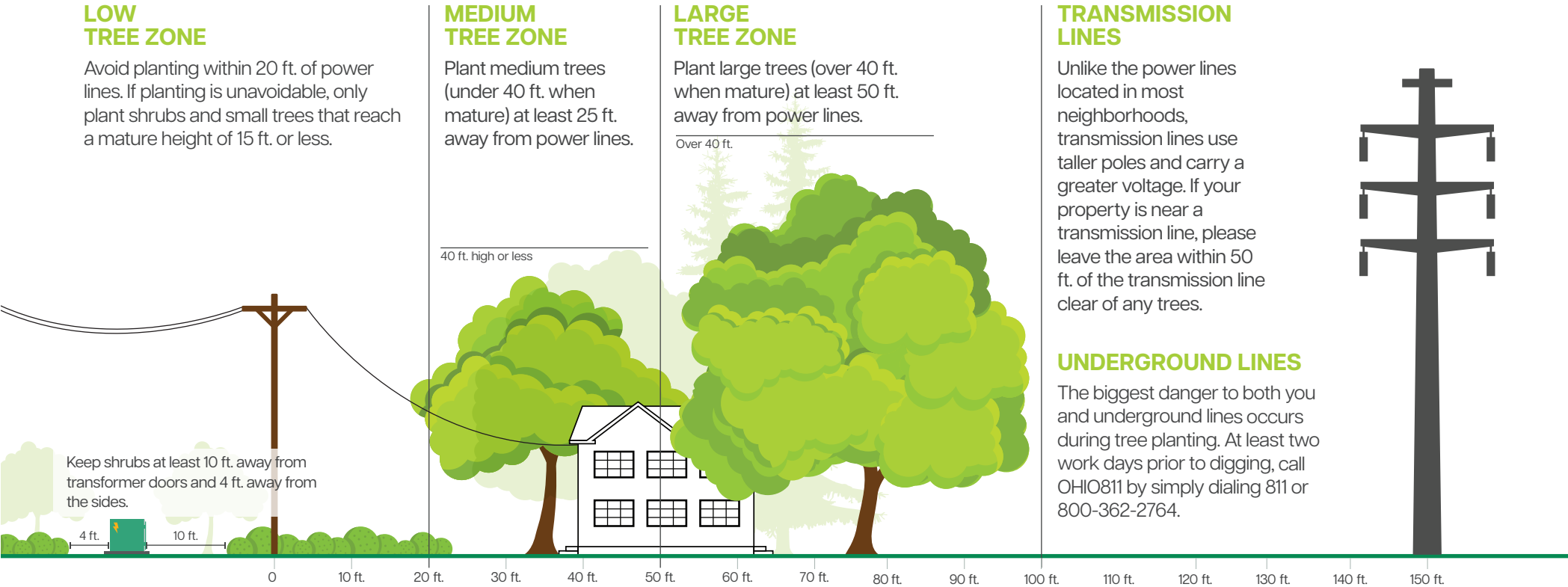
Plant large trees (over 40 ft. when mature) at least 50 ft. away from power lines.

## TRANSMISSION LINES

Unlike the power lines located in most neighborhoods, transmission lines use taller poles and carry a greater voltage. If your property is near a transmission line, please leave the area within 50 ft. of the transmission line clear of any trees.

## UNDERGROUND LINES

The biggest danger to both you and underground lines occurs during tree planting. At least two work days prior to digging, call OHIO811 by simply dialing 811 or 800-362-2764.



Are you planning an outdoor project that involves digging?  
Call 811 before you dig.

Call 811 before you break ground. Your local utilities will visit your site and mark the location of any underground lines free of charge. Knowing where your utility lines are buried will help you avoid injury, service outages and costly repairs.

### UTILITY MARKER FLAGS

- Electric
- Gas
- Communications
- Water
- Sewer