

# UNDERGROUND SERVICE INSTALLATION

## SINGLE PHASE 120/240 VOLT, THREE WIRE, 200 AMP

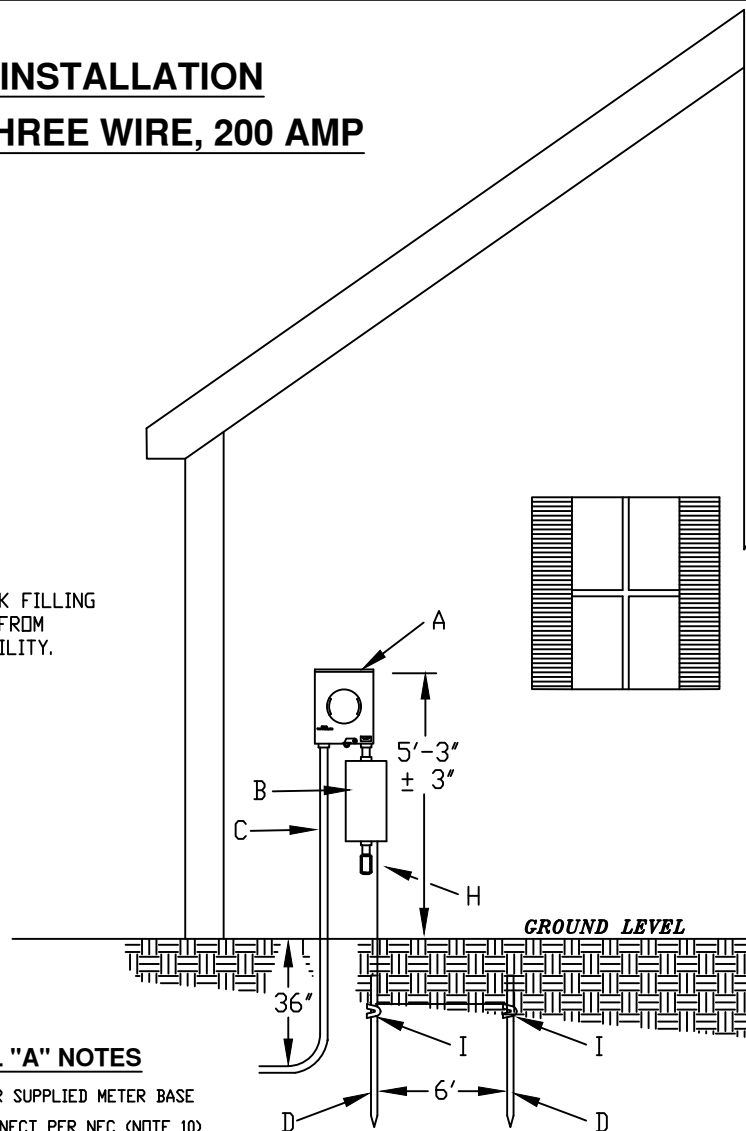
### GENERAL NOTES

- ① THE MEMBER SUPPLIED METER BASE THAT IS COOPERATIVE APPROVED SHALL BE INSTALLED, AT THEIR EXPENSE, AT A LOCATION DETERMINED BY THE COOPERATIVE. ALL COOPERATIVE INSTALLED MATERIAL REMAINS PROPERTY OF THE COOPERATIVE.
- ② TWO DRIVEN GROUND RODS WILL BE INSTALLED MIN. 2 FEET FROM THE FOUNDATION AND THE TOP WILL BE ONE FOOT BELOW THE SURFACE OF THE GROUND. THE GROUND ROD WILL EITHER BE 5/8 INCH BY 8 FOOT COPPER CLAD ROD OR A 5/8 INCH BY 8 FOOT GALVANIZED SOLID ROD. THE GROUND RODS SHALL BE SEPARATED AT MINIMUM 6 FEET FROM ONE ANOTHER.
- ③ THE MEMBER WILL BE RESPONSIBLE FOR INSTALLING THE WIRE AND CONDUIT TO THE EMERGENCY OR SERVICE DISCONNECT. DO NOT RUN MEMBER'S CONDUCTOR THROUGH BACK OF METER BASE.
- ④ THE SERVICE GROUNDING CONDUCTOR (BARE COPPER WIRE) SHALL BE CONTINUOUS AND TIED TO THE NEUTRAL CONDUCTOR IN THE SERVICE DISCONNECT (FUSED/BREAKER DISCONNECT) OR MAIN SERVICE PANEL IF THE DISCONNECT IS AN EMERGENCY DISCONNECT (SOLID-BLADE DISCONNECT), AND SHALL NOT BE IN OR ROUTED THROUGH THE METER BASE.
- ⑤ IF DECIDED MEMBER IS RESPONSIBLE FOR TRENCHING, THE TRENCHING (AS SHOWN ON SPEC) AND BACK FILLING OF THE TRENCH AND THE REPAIR TO THE SIDEWALKS, DRIVEWAYS, LAWNS, OR LANDSCAPING RESULTING FROM THE INSTALLATION REPAIR OR MAINTENANCE OF THE SERVICE FACILITIES WILL BE MEMBER'S RESPONSIBILITY.
- ⑥ NO SERVICE WILL BE RUN UNDER PUBLIC ROADS UNLESS THE MEMBER ASSUMES THE RESPONSIBILITY OF ALL COSTS ASSOCIATED WITH THE INSTALLATION INCLUDING THE OBTAINING OF ALL REQUIRED HIGHWAY PERMITS.
- ⑦ THE ROUTE OF THE TRENCH MUST BE APPROVED BY THE COOPERATIVE AND DUG TO THE COOPERATIVE'S SPECIFICATIONS.
- ⑧ THE METER BASE MUST BE MOUNTED BEFORE SERVICE LINE IS INSTALLED.
- ⑨ THE METER BASE MUST BE INSPECTED BY THE APPROPRIATE GOVERNMENTAL AUTHORITY, WHERE REQUIRED, BEFORE SERVICE IS CONNECTED.
- ⑩ EMERGENCY OR SERVICE DISCONNECT IS REQUIRED PER NEC. EMERGENCY DISCONNECT WOULD BE A SOLID BLADE DISCONNECT, WHEREAS A SERVICE DISCONNECT WOULD BE A FUSED/BREAKER DISCONNECT. A METER/MAIN COMBINATION UNIT SUFFICES AS A SERVICE DISCONNECT.
- ⑪ ALL WIRING ACCORDING TO NEC
- ⑫ ALUMINUM ELECTRICAL JOINT COMPOUND SHALL BE APPLIED TO ALL ALUMINUM CONDUCTORS BEFORE INSTALLING IN TERMINALS OF METER BASE.

**SERVICE ENTRANCE WIRE SIZE TABLE**  
THREE-WIRE-SINGLE PHASE, RESIDENTIAL SERVICE  
CONDUCTOR TYPES AND SIZES  
RH-RHH-RHW-THW-THWN-THHN-XHHW

| BARE COPPER<br>GROUND WIRE | COPPER     | ALUMINUM AND<br>COPPER-CLAD AL. | SERVICE IN<br>AMPERES |
|----------------------------|------------|---------------------------------|-----------------------|
| 4                          | AWG<br>3/0 | AWG<br>4/0                      | 200                   |

**CALL: OHIO UTILITIES PROTECTION SERVICE  
BEFORE YOU DIG. 1-800-362-2764**



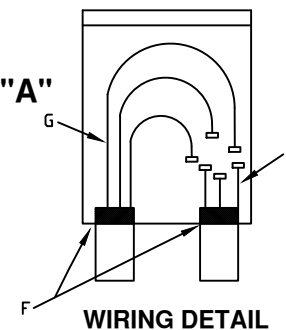
### DETAIL "A" NOTES

- Ⓐ MEMBER SUPPLIED METER BASE
- Ⓑ DISCONNECT PER NEC (NOTE 10)
- Ⓒ 2 INCH RISER SUPPLIED BY COOPERATIVE
- Ⓓ 2 x GROUND ROD x 8 FEET DEEP. 6 FOOT SEPARATION
- Ⓗ SERVICE GROUNDING CONDUCTOR (NOTE 4)
- Ⓘ GROUND ROD CLAMP

### WIRING DETAIL

- Ⓔ LOAD WIRES INSTALLED BY MEMBER
- Ⓕ INSULATING BUSHINGS
- Ⓖ WIRES FURNISHED AND INSTALLED BY THE COOPERATIVE

### DETAIL "A"



DATE: 5/9/24

CHK BY: JEF

DWN BY: JME

SCALE: NA

NOTES:

**UNDERGROUND  
SERVICE INSTALLATION**

