

UNDERGROUND SERVICE INSTALLATION

SINGLE PHASE 120/240 VOLT, THREE WIRE, 200 AMP

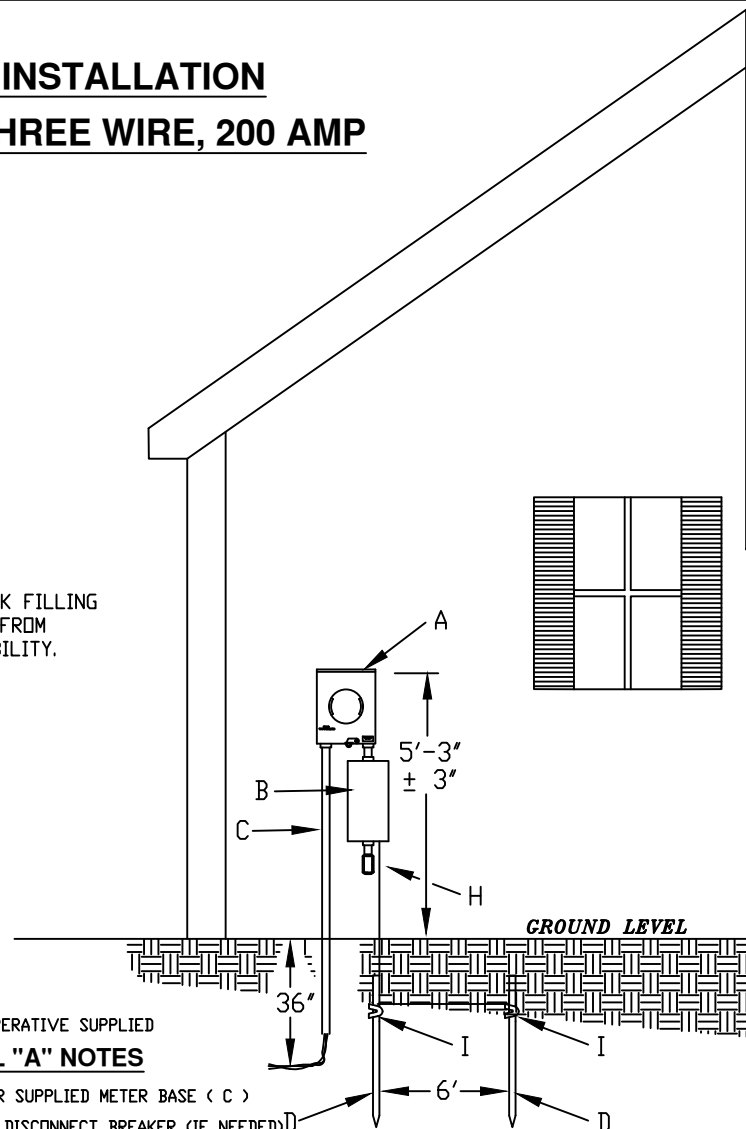
GENERAL NOTES

- ① THE MEMBER SUPPLIED METER BASE THAT IS COOPERATIVE APPROVED SHALL BE INSTALLED, AT THEIR EXPENSE, AT A LOCATION DETERMINED BY THE COOPERATIVE. ALL COOPERATIVE INSTALLED MATERIAL REMAINS PROPERTY OF COOPERATIVE.
- ② TWO DRIVEN GROUND RODS WILL BE INSTALLED MIN. 2' FEET FROM THE FOUNDATION AND THE TOP WILL BE ONE FOOT BELOW THE SURFACE OF THE GROUND. THE GROUND ROD WILL EITHER BE 5/8" INCHES BY 8' FOOT COPPER CLAD ROD OR A 5/8" INCH BY 8' FOOT GALVANIZED SOLID ROD. THE GROUNDS RODS SHALL BE SEPARATE AT MINIMUM 6' FROM ONE ANOTHER.
- ③ THE MEMBER WILL BE RESPONSIBLE FOR INSTALLING THE WIRE AND CONDUIT TO THE MAIN FUSED DISCONNECT. DO NOT RUN MEMBERS CONDUCTOR THRU BACK OF METER BASE.
- ④ IF DECIDED MEMBER IS RESPONSIBLE FOR TRENCHING, THE TRENCHING (AS SHOWN ON SPEC) AND BACK FILLING OF THE TRENCH AND THE REPAIR TO THE SIDEWALKS, DRIVEWAYS, LAWNS, OR LANSCAPING RESULTING FROM THE INSTALLATION REPAIR OR MAINTENANCE OF THE SERVICE FACILITIES WILL BE MEMBERS RESPONSIBILITY.
- ⑤ NO SERVICE WILL BE RUN UNDER PUBLIC ROADS UNLESS THE MEMBER ASSUMES THE RESPONSIBILITY OF ALL COSTS ASSOCIATED WITH THE INSTALLATION INCLUDING THE OBTAINING OF ALL REQUIRED HIGHWAY PERMITS.
- ⑥ THE ROUTE OF THE TRENCH MUST BE APPROVED BY THE COOPERATIVE AND DUG TO THE COOPERATIVE'S SPECIFICATIONS.
- ⑦ THE METER BASE MUST BE MOUNTED BEFORE SERVICE LINE IS INSTALLED.
- ⑧ THE METER BASE MUST BE INSPECTED BY THE APPROPRIATE GOVERNMENTAL AUTHORITY, WHERE REQUIRED, BEFORE SERVICE IS CONNECTED.
- ⑨ DISCONNECT REQUIRED IF THE DISTANCE FROM THE ENTRANCE POINT OF DWELLING TO THE MAIN DISCONNECT IS IN EXCESS OF THREE FEET.
- ⑩ ALL WIRING ACCORDING TO NEC
- ⑪ ALUMINUM ELECTRICAL JOINT COMPOUND SHALL BE APPLIED TO ALL ALUMINUM CONDUCTORS BEFORE INSTALLING IN TERMINALS OF METER BASE. AS PER N.E.C

SERVICE ENTRANCE WIRE SIZE TABLE
THREE-WIRE-SINGLE PHASE, RESIDENTIAL SERVICE
CONDUCTOR TYPES AND SIZES
RH-RHH-RHW-THW-THWN-THHN-XHHW

BARE COPPER GROUND WIRE	COPPER	ALUMINUM AND COPPER-CLAD AL.	SERVICE IN AMPERES
4	AWG 3/0	AWG 4/0	200

**CALL: OHIO UTILITIES PROTECTION SERVICE
BEFORE YOU DIG. 1-800-362-2764**

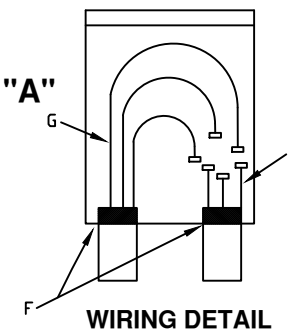


(C) COOPERATIVE SUPPLIED

DETAIL "A" NOTES

- Ⓐ MEMBER SUPPLIED METER BASE (C)
- Ⓑ FUSED DISCONNECT BREAKER (IF NEEDED)
- Ⓒ 2" RISER SUPPLIED BY COOPERATIVE
- Ⓓ 2 x GROUND ROD x 8 FEET DEEP, 6 FOOT SEPARATION
- Ⓗ SERVICE GROUNDING CONDUCTOR
- Ⓘ GROUND ROD CLAMP

DETAIL "A"



WIRING DETAIL

- Ⓔ LOAD WIRES INSTALLED BY MEMBER
- Ⓕ INSULATING BUSHINGS
- Ⓖ WIRES FURNISHED AND INSTALLED BY THE COOPERATIVE

DATE: 7/12/22

CHK BY: JEF

DWN BY: JME

SCALE: NA

NOTES:

**UNDERGROUND
SERVICE INSTALLATION**

